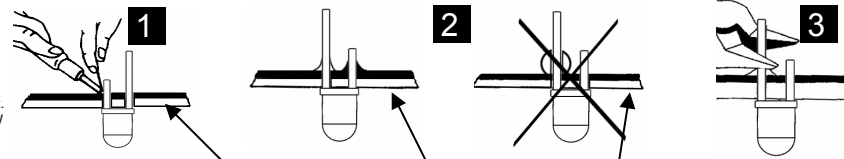
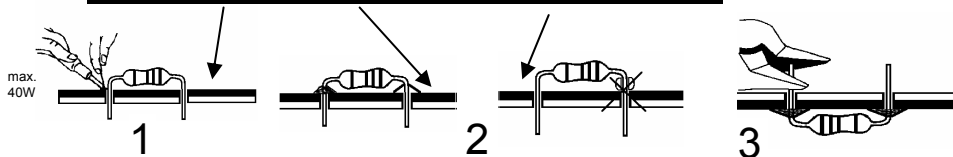


Solder side - Soldeerzijde - Côte de soudure - Lötseite - Lado de los soldadure



Component side - componentenzijde - Côte composants - Bauteileseite - Lado de los componentes

START **1** Resistor - Weerstand - Résistance - Widerstand - Resistencia - Motstand - Vastus - Resistenze

◇ R1 : 1K	(Brown, Black, Red) - (Bruin, Zwart, Rood) - (Brun, Noir, Rouge) - (Braun, Schwarz, Rot) - (Brun, Svart, Röd) - (Ruskea, Musta, Punainen) - (Marrón, Negro, Rojo) - (Castanho, Preto, Encarnado) - (Marrone, Nero, Rosso)
◇ R2 ... R4 : 18K	(Brown, Grey, Orange) - (Bruin, Grijs, Oranje) - (Brun, Gris, Orange) - (Braun, Grau, Orange) - (Brun, Grau, Orange) - (Ruskea, Harmaa, Oranssi) - (Marrón, Gris, Naranjado) - (Castanho, Cinzento, Laranja) - (Marrone, Grigio, Aranciato)
◇ R5 ... R18 : 2K2	(Red, Red, Red) - (Rood, Rood, Rood) - (Rouge, Rouge, Rouge) - (Rot, Rot, Rot) - (Röd, Röd, Röd) - (Punainen, Punainen, Punainen) - (Rojo, Rojo, Rojo) - (Encarnado, Encarnado, Encarnado) - (Rosso, Rosso, Rosso)
◇ R19, R20 : 5K6	(Green, Blue, Red) - (Groen, Blauw, Rood) - (Vert, Bleu, Rouge) - (Grün, Blau, Rot) - (Grön, Blå, Röd) - (Vihreä, Sininen, Punainen) - (Marrón, Azul, Rojo) - (Verde, Azul, Encarnado) - (Verde, Blu, Rosso)

START **1** Jumper

2 Push button

3 IC

5 Battery

9V battery

Batteryholder

8mm spacers (2x)

Screw (2x)

◇ SW1 : SELECT

◇ IC1 : VM170 (programmed PIC10F200)

2 Zenerdiode

Watch the polarity!
Attention à la polarité!

CATHODE

ZD...

◇ ZD1 : 4V7

3 Condensator

C...

◇ C1 : 100nF (104)

4 Transistor

T...

◇ T1 : BC547B

◇ T2 : BC547B

◇ T3 : BC547B

5 DC connector

◇ SK1

4 LEDs

Watch the polarity!
Attention à la polarité!

CATHODE

LD...

LD1

◇ 30 x

◇ 20 x

◇ 10 x

(Red - Rood - Rouge - Rot - Rojo)

(Black - Zwart - Noir - Schwarz - Negro)